



## DIRECT ACTION YOUTH WEEKLY UPDATE

---

NOVEMBER 23, 2020

Did you know that a biologist once wrote an entire book about one square metre of forest floor? [The Forest Unseen](#), by David Haskell, is the story of that single square metre witnessed over the course of an entire year. For many people, the urge to escape, to go away, to be in new places and see new things is overwhelming. We drive, ferry, train and jet off around the world to expand ourselves and our horizons.

Imagine, though, the incredible events occurring in our backyards, in our local parks and even our sidewalks. Now especially is a good time to pay attention to the wild entertainments close to home.

### GENERAL UPDATES

**YOU. ARE. ALL. AMAZING.** We loved seeing your stories and pictures! Mo Phùng, social media guru for Ocean Bridge, sends along a message that she was so impressed by the quality of what you created. **THANK YOU!**

A [Communications Guide](#) now exists. You can find it under **Resources > Communications & Writing** on the website. The guide is intended as a very high-level resource to help you start thinking about getting your message out there, and we welcome your thoughts. If you need help for specific skills, like formatting, editing videos, mind-mapping, software, or anything else, just tell us. We're happy to share whatever we know!

### ACTIVITIES

**THIS WEEK** November 26<sup>th</sup> at 1pm (PT) / 4pm (ET) join Ocean Watch research assistant Jen Chapman as she gives an engaging overview of the changes in ocean pollution, research, citizen science, marine mammal rescue and the seafood industry. [Register for free here.](#)

**RESEARCH HIGHLIGHT:** BC's Howe Sound is home to prehistoric glass sponge reefs thought to be extinct for more than 40 million years. Learn more about Dr. Jeff Marliave, Laura Borden, and a group of deeply committed citizen scientists in a new documentary called 'Moonless Oasis' available now on [CBC Gem](#).

### WEBSITE

**BLOGS.** *That part of the website you like to pretend isn't there.* Many of you are coming up to the middle or the end of your placement, and it would be fantastic if you posted a short blog entry about something that caught your attention over the past few months. Share pictures or videos to help tell your story!

**GALLERY.** Now that you've had a chance to choose the best of the best from your photo stash, time to put them up on the website!

**DISCUSSIONS.** Stay tuned this week for a new discussion question about Citizen Science.





## SPINY SAYS...

Lessons from the Lumpsucker.



Try to find a magnifying glass, or a loupe, or even a microscope if you can. Look at everyday things in a new way!

## WEEKLY FUN FACT

At about 5 million trillion trillion strong, bacteria and their cousins, the archaea, vastly outnumber all other life-forms on earth. Lined up end to end, they would stretch some 10 billion light-years — literally from here to the edge of the visible universe.

To infinity,  
AND BEYOND!



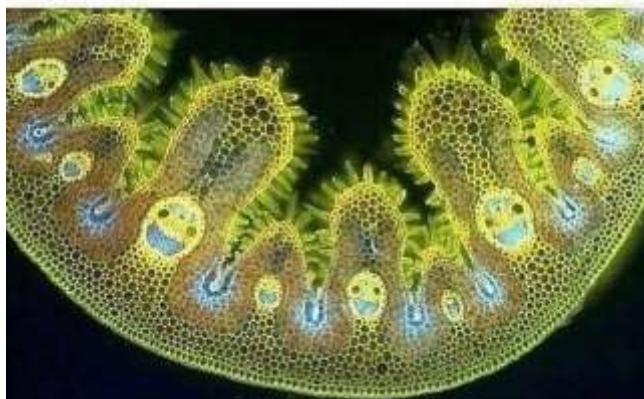
## QUOTE OF THE WEEK

“To love nature and to hate humanity is illogical. Humanity is part of the whole. To truly love the world is also to love human ingenuity and playfulness. Nature does not need to be cleansed of human artifacts to be beautiful or coherent. Yes, we should be less greedy, untidy, wasteful, and shortsighted. But let us not turn responsibility into self-hatred. Our biggest failing is, after all, lack of compassion for the world. Including ourselves.”

- David George Haskell, *The Forest Unseen: A Year's Watch in Nature*

## LAUGH OF THE WEEK

grass cells are so cute under a microscope. they look so happy, just chlorafilled with joy!



## CONTACTS

Ocean Bridge staff are here to support you. Feel free to contact us with any questions, comments or concerns.

### **Ocean Bridge Administration**

[OceanBridge@ocean.org](mailto:OceanBridge@ocean.org)

### **Office Hours**

Monday to Friday  
8:00am to 4:00pm PT

### **Zana Mody**

MANAGER, OCEAN BRIDGE DIRECT ACTION

[Zana.Mody@ocean.org](mailto:Zana.Mody@ocean.org)

M 647 528 6597

### **Office Hours**

Monday to Friday  
8:00am to 4:00pm PT

### **Samantha Wilde**

PROGRAM SPECIALIST, OCEAN BRIDGE DIRECT ACTION

[Samantha.Wilde@ocean.org](mailto:Samantha.Wilde@ocean.org)

M 778-679-4548

### **Office Hours**

Monday to Friday  
8:00am to 4:00pm PT

**Have an amazing week!**